



**THE FOREST
BRIDGE TRUST**
Ngāhere Whakawhiti
Protect. Enhance. Connect.

Our Impact Report 2024

The Forest Bridge Trust
Joining people and landscapes together

Ngāhere Whakawhiti
Te tūhono tāngata me te whenua

WWW.THEFORESTBRIDGETRUST.ORG.NZ

PROTECT MANAAKI

ENHANCE WHAKAPAIPAI

CONNECT TŪHONO

OUR BLESSING

HE KARAKIA HAUMANU TAIAO

This is the force of the heavens above. This is the force of the earth below.
May the environment be fostered to last forever steadfast.
We all agree in unison.

Ko Ranginui e tū nei, Ko Papatūānuku e takoto nei,
Kia haumanutia ko te taiao kia ora, Kia kumanutia ko te taiao kia mau
Kia tina! TINA! Hui, ē; TĀIKI, E!



Acknowledgements to our loved ones who have passed from this world.
May you all rest well.
To those of us who are living,
tēnā tātou katoa,
greetings to us all.

Ngāti Manuhiri

Ko Tamahanga te Maunga,
Ko Hauturu-ā-Toi te motu whakahirahira,
Ko Te Moananui-ā-Toi te Moana,
Ko Tainui Ko Moekākara ngā Waka,
Ko Manuhiri te Tāngata,
Ko Manuhiri te Rangatira,
Ko Manuhiri te Tupuna.

Ki a koutou mā o te ao wairua, moe mai, moe mai,
moe mai rā. Ka hoki mai ngā kānohi ora ki a tātou,
tēna koutou, tēnā koutou, tēnā tātou katoa. Ki ngā
tāngata whenua o te rohe nei, Ngāti Manuhiri, me
Ngāti Whātua, tēnā koutou katoa. Ki ngā Maunga,
ki ngā awa, ki ngā moana, ki ngā Waka, ki ngā tūpuna,
ki ngā tāngata whenua, tēnā koutou,
tēna koutou, tēnā tātou katoa.

Ngāti Whātua

Ko Taranaki te Maunga, ko Araparera te awa,
ko Te Aroha Pa te marae,
Ko Tuhirangi te Maunga, ko Kakanui te awa,
ko Te Kia Ora te marae.
Ko Atuanui te Maunga,
ko Hoteo te Awa, ko Puatahi te marae.
ko Kaipara te Moana,
ko Ngāti Rango te hapu,
ko Ngāti Whātua te iwi.

Source: This karakia is derived from the mihi within Te Haumanu Taiao 2023. Ngā Iwi Mana Whenua o Tāmaki Makaurau encourage the use of the karakia for the purpose of restoration consistent with Te Haumanu Taiao: Restoring the natural environment in Tāmaki Makaurau.



Message from our Board

It is with deep appreciation that I present this year's Impact Report on behalf of the Trustees and the team. The progress we have collectively made, with community and landowners over the past year is truly remarkable. As the environment settles into this new normal, with habitats becoming safer from predators, we are witnessing a resurgence of kiwi and other treasured taonga species across the landscape.



A heartfelt thank you goes out to our dedicated local volunteers who spend countless hours checking traplines, recording catches, and helping to restore our ecosystem. We also extend our gratitude to our contractors, whose partnership with landowners, farmers, and community groups amplifies the impact highlighted in this report.

Our CEO, Ana Christmas, who joined us in August of last year, has brought a dedicated focus on building meaningful relationships—not only within the team but also with local iwi, funders, landowners, and community groups. This has fostered a spirit of open communication and mutual support, which is evident in the team's collaboration and in their engagement with the community.

We are incredibly grateful for the support of organisations such as Auckland Council, Kaipara Moana Remediation, Foundation North, and Save the Kiwi/Department of Conservation. Your contributions make our work possible, and we look forward to continued collaboration as we work towards a thriving natural environment together.

We also want to acknowledge the Trust's role in raising community awareness and enhancing social connection. Following the challenges of the cyclone and floods, the team's work has proven essential in helping communities strengthen their resilience and adapt sustainably to these changes.

Finally, I extend our deepest thanks and appreciation to each member of the team. Your hard work and commitment to upholding the vision, mission and values of the trust Trust while achieving the objectives of our funders has been invaluable.

Sincerely
Kevin Adshead



PROTECT MANAAKI



ENHANCE WHAKAPAIPAI



CONNECT TŪHONO

Message from our CEO



As I reflect on the past year, I am immensely proud of The Forest Bridge Trust's remarkable journey and the collective efforts that have brought us closer to our vision; a thriving landscape from the Kaipara Harbour to the Pacific Coast, protected and cherished by connected, empowered communities.



and environmental challenges. Our response has reinforced the Trust's enduring commitment to environmental stewardship and community support, ensuring that together, we continue to build a sustainable legacy of care and protection for the land and its people.

This year's Impact Report tells the story of a committed team, passionate volunteers, and a supportive network of partners who have made measurable strides in restoring our ecosystems, protecting our native species, and engaging our communities. Together, we've expanded predator control to safeguard our precious taonga species, forged educational and immersive community initiatives, and bolstered resilience through partnerships that strengthen both the environment and our local communities.

This work would not be possible without our volunteers and community groups, whose dedication brings our collective mission to life. We are equally grateful for our local and national funding partners whose support allows us to extend our reach and resources.

A meaningful highlight of the year has been our learning journey into te ao Māori, led by Whaea Rewana Walker. Through wānanga and kōrero, we've deepened our understanding of tikanga and kaitiakitanga principles, which continue to guide our approach to restoration and community engagement. This journey has enriched our team's knowledge and fostered a profound appreciation for the interconnectedness between people and the land we protect.

Looking ahead, The Forest Bridge Trust remains steadfast in its commitment to restoring the mauri of our environment and nurturing the people who protect it. Although challenges lie ahead, we know that the impact of these years has been profound, creating lasting benefits for te taiao (the natural world) and generating significant economic and social value across the district.

At the heart of our work is a belief in meaningful relationships. Since joining the Trust last year, I have witnessed firsthand the power of collaboration - united by a shared purpose. This commitment has enabled our team to deepen their impact, foster open communication, and inspire a new generation of environmentalists.

I invite you to journey through the highlights of 2023-2024 in this report, as we celebrate our shared achievements and embrace the opportunities and responsibilities that lie ahead.

Horiahā ngā here, purea nei, e te hau, makere ana, e tu e tu e tū, Tane Mahuta.

The resilience of our communities has been especially inspiring amid the current economic

Spread the bonds, wash away & be cleansed by the wind and rain. Stand tall within the realm of Tane Mahuta.

Ana Christmas
CEO, The Forest Bridge Trust



PROTECT MANAAKI



ENHANCE WHAKAPAIPAI



CONNECT TŪHONO

OUR VISION

Moemoeā

Connected people and landscapes with healthy forest and flourishing indigenous wildlife from the Kaipara Harbour to the Pacific Coast.

Mai i te Moana o Kaipara whakawhiti ki te Moana nui ā Kiwa e tūhono ana ngā kararere me ngā whakatuputanga taketake i te whenua hua pai ana me ngā tāngata whenua.



PROTECT MANAAKI



ENHANCE WHAKAPAIPAI



CONNECT TŪHONO

OUR MISSION

Whāinga

We aim to inspire, support and resource people who own, occupy or manage land, to protect and enhance ecosystems and native species through fencing native forest, controlling invasive species, revegetating for connection and restoring waterways.

Ko te hiahia ki te tautoko ngā tangata o te whenua, hei whakamau, hei manaaki, hei whakamahori i ngā momo kararehe tūturu o Aotearoa, mai i ngā taiapa i ngā wāhi, patu i ngā whakatupuranga kino, me te whakaora i ngā wai o te whenua.

We will enable this work to grow to a landscape scale through our connection with local people, existing community conservation groups and networks, which all have a critical role.

E ahei ana mātou te whakawhanake ngā whenua mā ngā tūhonotanga o ngā roopu rereke, a, ngā tangata whenua, ngā roopu tiaki ngahere, kararere, manu, tuturu o Aotearoa, ngā roopu katoa o te rohe nei.

By inspiring and supporting a socio-ecological change movement, we aim to encourage a voluntary and sustainable workforce who are committed to protecting and enhancing our surrounding ecosystems.



PROTECT MANAAKI



ENHANCE WHAKAPAIPAI



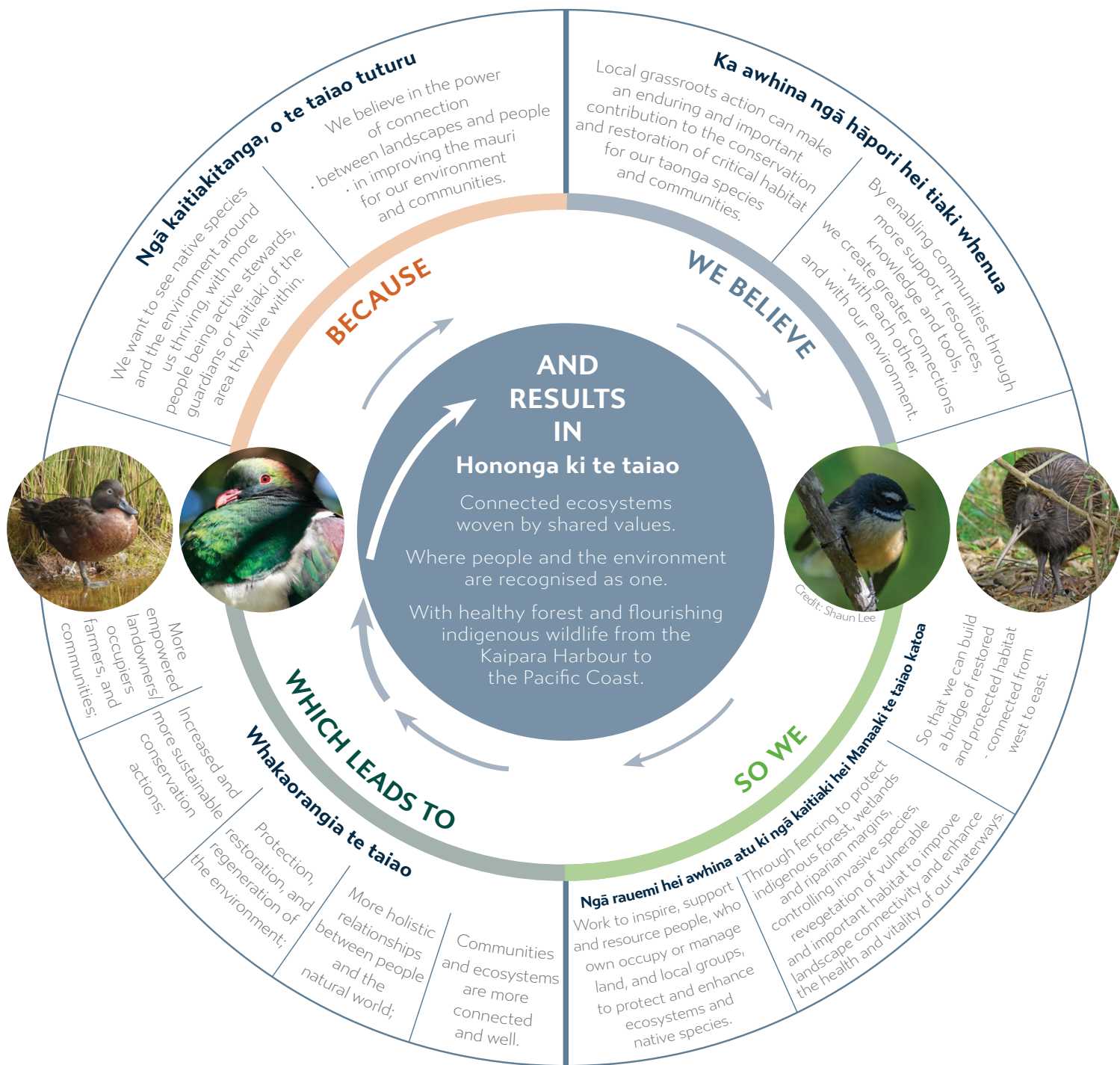
CONNECT TŪHONO



OUR IMPACT NARRATIVE

Ngā kōrero

Our impact narrative brings our impact model together into a clear and concise impact story that champions our societal, cultural and environmental contributions.



WHICH LEADS TO Whakaorangia te taiao



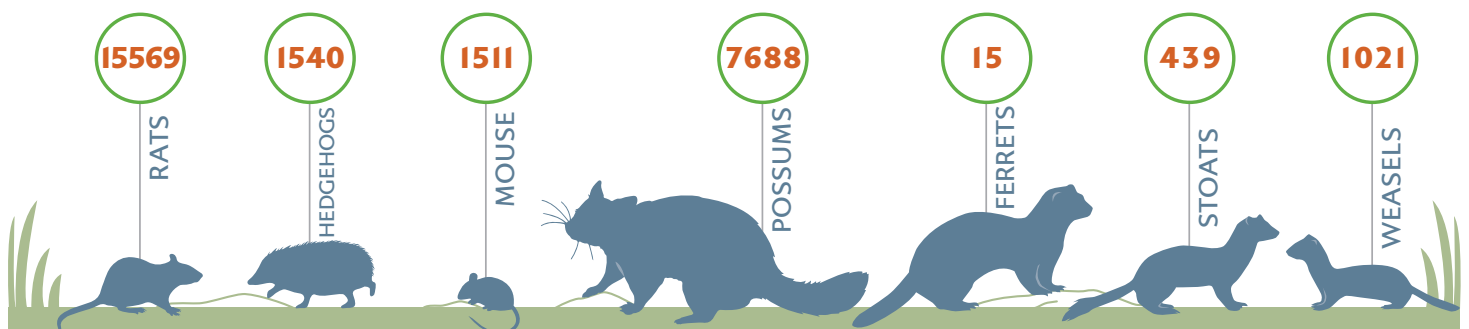
1. More empowered landowners/occupiers, farmers, and communities

15 Existing community trapping hubs supported this year
9,400 Landowner and resident trapping hours (based on TrapNZ records)



2. Increased and more sustainable conservation actions

1,078 Trapping hours
34 Bird monitoring hours
661 Trail camera checks and other hours
228 New Landowners or residents joining our trapping network



TOTAL PESTS 27,783

caught this year across our area of interest and recorded in shared TrapNZ data.

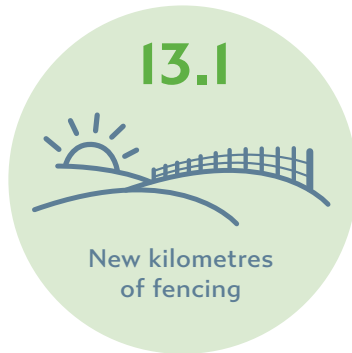


3. Protection, restoration, and regeneration of the environment

15,179 Additional hectares under mustelid control

47,543 Hectares completed of our forest bridge by end June 2024.

3,162 Total new traps added in our area of interest recorded in shared TrapNZ data



4. More holistic relationships between people and the natural world

35 Community groups now engaged with TFBT



5. Communities and ecosystems are more connected and well

1,560 Attendees at all events



Introduction

The Forest Bridge Trust is driven by a vision where empowered local communities lead the way in restoring and protecting our ecosystems. With a deep commitment to connecting people with the environment, the Trust has made a significant impact in protecting native species and enhancing the health of ecosystems, stretching from the Kaipara Harbour to the Pacific Coast. This report highlights the key activities, achievements, and outcomes of our conservation efforts from July 2023 to June 2024. These initiatives reflect our core work focus areas and strategic pillars for environmental stewardship.

STRATEGIC PILLARS

Ngā Pou Rautaki

PILLAR / POU

Ecosystem Protection & Restoration

Te whakaora o te mauri o te taiao

Long Term Objective

Protected, restored and healthy environments with flourishing native biodiversity.

PILLAR / POU

Inspire, Engage & Resource

Whakahihiko me te whakaora ngā tāngata i te ao turoa me te taiao

Long Term Objective

Holistic relationships between people and the natural world where people are inspired to take consistent actions for the health and sustainability of their environment.

PILLAR / POU

Partnerships, Collaboration & Resilience

Te mahitahi, te tūhononga me te manawanui

Long Term Objective

A woven network of diverse partnerships committed to shared environmental goals.

PILLAR / POU

Economic Sustainability

Toitu te punaha ohanga

Long Term Objective

We achieve economic sustainability for our community, partners, and ourselves through ecosystem regeneration, resilience and the creation of practices supporting long-term economic growth. This will be achieved without negatively impacting social, environmental and cultural aspects.



Ecosystem Protection & Restoration

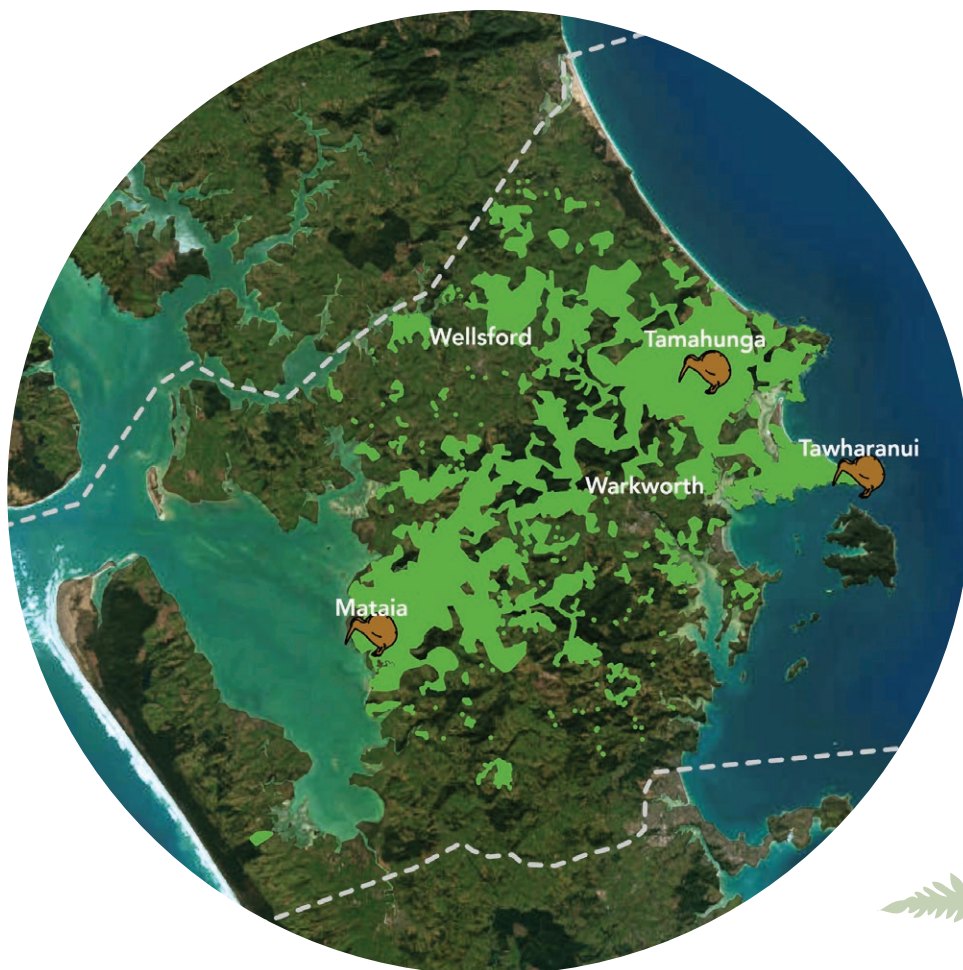
Te whakaora o te mauri o te taiao

A primary focus of The Forest Bridge Trust is restoring and protecting the ecosystems that support taonga species. Over the past 10 years The Forest Bridge Trust has made remarkable progress by expanding predator control networks, enhancing habitat connectivity, and working with local communities to ensure that endangered species have safe environments in which to thrive. This year has seen some critical and tangible achievements as we continue to work towards our vision of connected people and landscapes with healthy forest and flourishing indigenous wildlife from the Kaipara Harbour to the Pacific Coast.

Achievements in Action

Building the Bridge

This year marked a critical milestone for our predator control goals. By expanding our trapping network through engagement with new landowners, we have now created a continuous bridge of protected habitat between the west and east coasts; safer for kiwi and other species. **Adding 15,179 hectares** to the area we have under mustelid (ferrets, stoats and weasels) control has grown our **coverage to 47,543 hectares** and moved us closer to our 54,000-hectare goal by June 2025. This expansion, supported by community volunteers and landowners, saw the **deployment of 3,162 new traps and a record 27,783 pests caught**.





Kiwi Monitoring Success

Intensified predator control produced significant and exciting results in 2023. Acoustic recorders picked up kiwi calls at 7 monitored sites in the Tāwharanui buffer zone, including 4 sites with male/female duet calls, confirming the growth and expansion of this population. To our great delight, a kiwi was spotted on a trail camera 7 km from Mataia (kiwi translocation site), indicating that kiwi dispersal is well underway across the landscape.

Long-tailed Bat Detection

Our deployment of bat detectors in summer led to the exciting confirmation that the nationally critical pekapeka-tou-roa/long-tailed bat, was present in our area. This rare find highlights the vital importance that predator control plays in protecting this endemic species. In response to the community's enthusiastic feedback, we expanded the initiative by loaning bat detectors to local residents, enabling them to actively monitor and protect bats on their own properties.

First Footage of the North Island Robin outside Tāwharanui Open Sanctuary

In spring 2023, a member of our Predator Control team captured footage of a toutouwai/North Island robin on private land in the Tāwharanui buffer zone, outside the predator-proof fence. Toutouwai/North Island robin (a species with limited gap-crossing abilities) have been recorded at two further locations outside the fence; compelling proof that restoration efforts including predator control and planting of vegetation corridors, which have been led by Auckland Council and TOSSI, are working.

Bird of the Year 2023

The Forest & Bird national Bird of the Year campaign provided an excellent opportunity for The Forest Bridge Trust to become a champion of one of our most endangered species, the matuku-hūrepo/Australasian bittern, and to introduce our audience to the critical role wetlands play in habitat for our native species. Our art competition, Picture A Bittern, engaged children of all ages; planting the seed to become kaitiaki for their environment, and local radio and press ran pieces about TFBT's work to protect bittern. As part of our campaign the Trust had ten minutes of significant national exposure to discuss matuku-hūrepo with Kim Hill on her iconic radio show, generating a notable increase of website hits.

The Forest Bridge Trust continues to embrace innovative approaches and technologies to enhance conservation outcomes and engage with broader communities. By utilising cutting-edge tools and creative outreach methods, we aim to expand our reach and improve our ability to monitor and protect native species. By incorporating technology and community-driven data collection, the Trust is enhancing both our conservation impact and public engagement, ensuring that more people are actively involved in protecting native species.





Ruru Listening Survey

In March 2024, we launched an interactive community ruru listening survey, **engaging over 200 residents** to record calls of New Zealand's native owl, the ruru, in their local areas.

This citizen science initiative fostered a deeper connection between participants and their nocturnal environments. The data collected provided a snapshot of ruru prevalence, and the results were shared through our newsletter, website, and social media, helping guide future conservation efforts.

Educational Videos

To enhance community support in predator control, our team created 13 "How To" videos, offering step-by-step guidance on using TrapNZ for data recording and practical demonstrations of various traps.

These videos, **viewed over 500 times**, have enabled individuals and groups to more effectively manage and document their predator control efforts.



Virtual Reality Experience

At our Spring Reboot event, we introduced a Virtual Reality (VR) station that allowed participants to embark on immersive journeys, from virtual forest walks to underwater explorations of ocean life. This captivating experience connected participants of all ages to the natural world in a fresh and engaging way.

Online Training

During February and March our team ventured into a new way of working by hosting online training sessions through Zoom, supporting community members in how to use the TrapNZ catch recording app on their mobile phones. Our three sessions covered how to set up your catch "project", trouble-shooting the common stumbling blocks, and top tips to make using the app easier.





Inspire, Engage & Resource

Whakahihiko me te whakaora ngā tāngata i te ao turoa me te taiao

We believe that community involvement is essential to creating lasting environmental impact. In 2023-2024, The Forest Bridge Trust engaged over **1,560 people** through **60 in-person events, workshops, and initiatives.**

These diverse events not only equipped participants with practical conservation skills and resources but also strengthened social connections, uniting the community around shared values and cultivating passionate environmental stewards dedicated to sustainable action.

Through these community-focused efforts, The Forest Bridge Trust continues to serve as a vital connector between local people and their environment. By offering opportunities for education, celebration, and action, we inspire and empower individuals to actively contribute to the restoration and protection of native ecosystems.

Achievements in Action

Conservation Hui

With the theme of "Building a Legacy," **184 people attended** our first Conservation Hui in September 2023, where local landowners and conservation experts shared strategies for environmental restoration. The impact of the hui inspired hope for long lasting tangible outcomes for our local area, and increased awareness of our mission, both locally and throughout the conservation community.

Spring Reboot Event

The November **Spring Reboot** attracted over **100 attendees** and featured practical trapping and recording demonstrations. Guest speakers from Tamahunga Trappers, Whitebait Connection, and other conservation groups provided insights into local conservation achievements.

Volunteering

This year brought significant expansion to our volunteer network with the addition of **two new traplines and 30 passionate new volunteers, bringing our team to 150** strong. To foster stronger community bonds, we introduced social events in each trapline area, allowing volunteers to connect and share their experiences. We also launched WhatsApp groups for most of our 22 community traplines, ensuring everyone stays safe, connected and well-supported with the resources they need. Our new quarterly Volunteers newsletter highlights volunteer achievements, updates, and personal stories, further strengthening the sense of community and shared purpose.

Women's Trapping Workshop

Run by our volunteer team in April 2024, our women only trapping training event offered a safe, nurturing space to learn new skills and ask questions on trapping. It was followed by a nature walk through one of our scenic traplines, offering a great opportunity to put their new trapping skills to the test. One attendee was **so inspired she has now started a new predator free group** for the area where she lives, increasing the impact of our event exponentially.



PROTECT MANAAKI



ENHANCE WHAKAPAIPAI



CONNECT TŪHONO



Know Your Dog and Kiwi Avoidance Training (KAT) Workshops

In 2023, we expanded our outreach by offering a 'Know Your Dog' workshop and two Kiwi Avoidance Training sessions for local dogs and their owners. The workshops were so popular that a waitlist quickly formed, prompting plans for additional sessions later in the year. This overwhelmingly positive response reflects the community's strong commitment to protecting kiwi populations. These workshops play a critical role in preventing dog-related kiwi deaths, further contributing to the conservation of this iconic species.

The Forest Bridge Trust Community Discussion group

Our Facebook chat group continues to attract new members as new local trappers join to build the forest bridge, with a growth of over 40% in the year. It has become a **space for the 480 community members** to share not only their trapping successes and tips, but also to celebrate the conservation gains that are starting to emerge, with species such as kākā, korimako / bellbird, pekapeka-tou-roa/ long-tailed bats, mohu pererū /banded rails and kākāriki being reported in well-trapped areas. A tribute to the mahi of the community across our forest bridge.



Agricultural and Pastoral – A&P Shows

In early 2024, the Trust engaged with local farmers and residents by attending the Helensville and Warkworth Agricultural and Pastoral shows. Our team's "walking talking kiwi" at Warkworth was a crowd favourite, drawing visitors to our stall and sparking meaningful conversations. These shows provided a valuable platform for raising awareness about our conservation efforts and partnership with Kaipara Moana Remediation, inspiring interest in local conservation initiatives and sediment reduction strategies.

Expanding Our Engagement

With a 50% increase in social media followers - a total of **2,473 across our platforms**, and 500 additional newsletter subscribers, bringing our end of June 2023 total to **1,638 subscribers**, we've expanded our reach, sharing our vision with an even broader community. Our **bi-monthly features in Mahurangi Matters** now connect with **over 20,000 readers** per edition, highlighting key projects like youth programs at Springboard Trust, kiwi monitoring results, and our community ruru survey. We were also proud to be **featured in Junction Magazine**, which reaches over **12,000 print readers and 15,000 online subscribers**, helping us engage with local residents who may not yet be directly involved in conservation efforts.



Partnerships, Collaboration & Resilience

Te mahitahi, te tūhononga
me te manawanui



The Forest Bridge Trust actively works with individuals, families, schools and youth to promote conservation education, ensuring the next generation understands the importance of protecting native species and ecosystems. Through these educational initiatives, we aim to instil a deep sense of responsibility and care for the environment in young people, ensuring they carry forward a legacy of environmental care for generations to come.

Achievements in Action

Education For Schools

In July and August 2023 we delivered our long-standing education programme, Forest Bridge Defenders, to **115, year 5/6 students at Matakana School**. This programme is run in three sessions over a three week period and aims to engage the entire school community in caring for the natural environment; highlighting the importance of creating safe habitats for native birds. Between sessions students were encouraged to try pest control and monitoring at their own homes, so they could see firsthand the positive effects on local bird populations in their own back yards. In response to requests from local schools, this year we also delivered short conservation education sessions to **39 year 9/10 students at the Horizon School**, and to **55 year 5/6 students at Warkworth Primary School**. In November 2023, The Forest Bridge Trust was invited by Ngāti Rango to deliver a pest control session for **130 year 5/6 students from Marlborough Primary School** as part of the hapu's cultural and conservation program. Held at Te Aroha Pa Marae and CUE Haven, this event provided tamariki with a hands-on learning experience about predator control and its role in protecting native species. The session also emphasised the importance of developing holistic relationships between people and te taiao - the natural world, encouraging students to become active stewards or kaitiaki in their communities.

The Forest Bridge Trust has developed collaborations and partnerships with other community organisations, academic institutions, government agencies and funders over almost 10 years. In 2023-24 we were actively engaged with 35 community conservation groups and strengthened our funding relationships with new and expanded contracts. With so many wonderful collaborations it is hard to select just a few to share, but here are some highlights from our year.

Fencing and Planting Initiatives

Throughout 2023, the Forest Bridge Trust Field Advisors worked with **Kaipara Moana Remediation (KMR)** to address erosion and sedimentation impacting waterways flowing into the Kaipara Harbour. In alignment with these efforts, funding criteria were revised to better support fencing and planting initiatives around riparian zones, erodible hillsides and protecting forest remnants. **13.10 kms of new fencing has been installed and 59,905 plants have been committed to be planted over 24.6 hectares**, all contributing to protecting the Kaipara Moana.

These initiatives have strengthened partnerships between landowners, local catchment groups, and iwi/hapu, reinforcing our shared commitment to the long-term health of the Kaipara Harbour.

Rabobank

Our association with Rabobank goes back to November 2022, when our volunteer team hosted a volunteering day for 16 Rabobank employees at the Mataia Restoration Project. This year, we were delighted to receive some extra income from the **Rabobank Sponsorship** to help with landowner riparian planting and fencing for the coming year.



PROTECT MANAAKI



ENHANCE WHAKAPAIPAI



CONNECT TŪHONO



Collaborations For Community Engagement

Over the year our team’s expertise in community engagement has led to new collaborations with **Auckland Council and the Rodney Local Board**, reaching out to our community network enabling and enhancing the efforts to increase possum control. Additionally, one of our team was seconded to **Island Conservation** to assist with the essential community engagement process to inform and gain landowner permissions for the pest eradication project on Kawau island.

Support for Kaitiaki

It has been our privilege to strengthen our collaboration with the Kaitiaki of **Ngā Maunga Whakahii o Kaipara** to support the predator control work of Atuanui, through providing extra hands and resources to protect and enhance this special and significant maunga.

Community Nature Connect Event (Summer 2024)

In February 2024, the Trust partnered with **CUE Haven and Wai Connection** to host the Community Nature Connect event, where over 50 participants learned about maintaining healthy waterways. Attendees explored a thriving stream ecosystem and native bush, discovering species like banded kōkopu and baby eels, and observed native wildlife, including ruru and wētā.



Kiwi Translocations

In early 2024, the Trust collaborated with local trappers and Ngāti Manuhiri to support the second release of kiwi on Mount Tamahunga. This translocation is the result of many years of planning and dedicated work by the volunteers at **Tamahunga Trappers, and Ngāti Manuhiri** which we are proud to support and be a part of.

A National Report

The **Ministry for the Environment [ArcGIS Storymap](#), *Our Atmosphere and Climate***, was released in October 2023, and we were honoured to be approached to have our work with communities selected for inclusion as an example of how it is possible to work together with communities to protect native forests and biodiversity.

Partnering with Nelson Marlborough Institute of Technology (NMIT)

In April 2024 we partnered with NMIT to offer our third training of the “5-Minute Bird Count” two-day course for our volunteers and members of other local community groups. This formal training activity provides people with the skills to observe and record the different bird species they see in a short time frame. It serves as a valuable tool in scientific research, promoting conservation efforts and enhancing our understanding of birds biodiversity. By involving citizen scientists, it not only enriches data collection but also strengthens the connection between communities and their natural environments.

Save The Kiwi Conference

The 2024 annual National Kiwi Hui, run in partnership by **Save The Kiwi and the Department of Conservation** took place from Wednesday, June 12th to Friday, June 14th in Queenstown. The hui attracted 130 passionate individuals dedicated to the conservation of New Zealand’s iconic kiwi bird. The Forest Bridge Trust’s volunteer team were invited to present a talk on Community Trapping, whilst our own CEO delivered a compelling workshop to the conference on Organisational Change and Resilience. Her insights into the adaptive strategies necessary for effective conservation work were well received, highlighting the importance of flexibility and innovation in the face of ongoing environmental and funding challenges.

Enviro Expo

Working in partnership with **Restore Rodney East**, we ended our year in June with a collaborative community conservation event. **Over 150 attendees and 27 other community conservation groups** were onsite with their stalls and team members, showcasing to the public what they do and how everyone can be involved. The VR underwater education experience provided by Blake NZ was a great way to help engage young families and rangitahi-and people of all ages were keen to take a turn.

Economic Sustainability

Toitu te punaha ohanga



Throughout 2023-2024, we have looked towards our future sustainability, considering the gains made and how we wish to continue working towards our vision with our communities, partners and funders. As we moved closer to the wind down of our five-year Jobs For Nature funded project in 2025, we envisaged new possibilities to build upon and explore, with existing and new partnerships, but in turn, would like to acknowledge the powerful, impactful and supportive partnerships we have with Save the Kiwi and the Department of Conservation through this period. It has been a stark reminder of the gains that can be made for the environment and community when resourced well.

Achievements in Action

Strategic Planning, Te Taiao – The World

In September 2023, our new CEO led the full team in a collaborative strategic process of reflection and aspiration for our future. Using Te Taiao as a framework which had a deep resonance for our team, this encouraged us to consider:

Te Paru-the Mud: What were our current challenges to overcome?

Right through to **Ngā Whetū-The Stars:** What are our dreams and aspirations for The Forest Bridge Trust? ... and all the natural elements in between.

Scoping New Opportunities

The completion of the first phase of our strategic planning process invigorated our team into the development of a series of potential projects to explore and scope which aligned to our Vision and Mission and had potential to generate new income streams. Working inclusively with landowners, our funding partners and forming some new relationships, new ideas and services are now firmly underway and expected to be implemented in late 2024.

GIS-based notifications alert and automatic reports

Arising from our project scoping, we have developed a system which integrates ArcGIS, TrapNZ and our CRM to send email notifications automatically for critical events, such as for a ferret caught, and provides us with automatic weekly trap catch summaries, data on newly installed traps, trap maintenance requests and any "inactive" traps which are due to be checked. This new technology greatly assists our front-line efficiency and reporting capability, and we hope to explore this as an adaptable tool for other organisations in the coming year.



PROTECT MANAAKI

ENHANCE WHAKAPAIPAI

CONNECT TŪHONO



Working With The Ākina Foundation

Being able to clearly articulate what we do, why we do it and the difference we make has been critical to our economic sustainability planning. In 2024 we were fortunate to be **funded by Auckland Council and Foundation North to work with Ākina**, who helped us to create and document our **Impact Model and Narrative**. It was a truly affirming and valuable process for the team involved, as well as producing the outcome we needed- to be able to showcase ourselves clearly to others. Ākina's resources and connections have been invaluable in providing tools and models to help us develop sound business projects for future work plans, which we would like to gratefully acknowledge.

Business Partnerships

Over many years we have developed supportive relationships with local businesses, which continue to contribute in a variety of ways to support our work. Looking ahead at opportunities for **larger and enduring corporate sponsorship and partnerships**, we have embarked on a dedicated programme to prepare us for new relationships. Over the coming year we aim to engage with business where we have a clear sustainability values alignment to achieve the quadruple bottom line – cultural, social, environmental and commercial.



Conclusion

The Forest Bridge Trust's collective and collaborative achievements in 2023-2024 illustrate the profound impact that community-driven conservation efforts can have on both the environment and local communities. By nurturing meaningful connections between people and te taiao-the natural world, the Trust is creating lasting change that will benefit future generations. The Trust's focus on empowering local stewards and kaitiaki, protecting vital ecosystems, and educating youth continues to drive a holistic and sustainable approach to environmental restoration.

What Others Say About Us

Over 7 years we have caught 600 possums, lots of rats and 28 wild cats that were breeding in the bush when we arrived. It sounded like a jungle when we arrived!! We have seen a return of the punga growth and all growth is looking good on most trees. Also bird life is better. Our neighbours have noticed a difference in their blocks of bush also so we are obviously getting the vagabond possums travelling around the area with their knapsacks. Many thanks for all your help and education you have supplied to everyone interested in conservation!

Regards, Susie Henwood (landowner)

You guys have done a great job on getting people on board. We have been trapping our property, mainly for possums, for 9 years now. We used to get over 200 every year, this year to date we only have 80! Rats and mustelids are still random though; however we have only just started doing them over the last 3 or 4 years! I love the Tamahunga bush, so it is always lovely to be in there, despite the tough walk!

Ngā mihi nui, Adrienne, (Volunteer)

Thank you for your recent deputation to update the Rodney Local Board on the activities of The Forest Bridge Trust. The local board were very impressed with your presentation. They also commend you on the energy and commitment the Trust brings to protecting our environment. It was encouraging to hear about the strong progress you are making and the outcomes you are achieving particularly given the vast area you cover. This important work wouldn't happen without the vision and efforts of people like yourselves.

Brent Bailey,
Rodney Local Board Chairperson

On behalf of the Earthskin Trust I would like to thank you and your Trust for your time, expertise and care that you are bringing toward a regenerative future for our children, land and sea.

Nancy King,
Earthskin Charitable Trust

We're proud to stand with those who support, grow and strengthen our rural communities. Each year Rabobank New Zealand employees are allocated a community leave day to get out and support initiatives in our local communities (such as the Forest Bridge Trust). We also are committed to helping our clients develop and implement sustainability solutions that best meets their unique needs. We work alongside our clients to profitably transition to lower-carbon and more sustainable food production systems."

Ross Neal,
Agribusiness Manager,
Rabobank

Integrating nature-based actions into Sawmill Brewery's operations has been undoubtedly beneficial for our business. Planting trees, protecting waterways and trapping pests on our land have contributed to positive environmental outcomes – cleaner streams and Kiwi release on Tamahunga for example. The unexpected bonus has been what our team have taken away personally from their projects. Getting hands on in our environment provides an opportunity for our team to be curious about what is around us and learn – this has a hugely positive effect on team culture. To be honest, the greatest benefit is to reinforce company values in a practical and visible way and improve culture. That's hugely beneficial and hard to do!"

Kirsty McKay,
Sawmill Brewery Room

Puhoi Landcare Group has been actively working with TFBT over the last 3-4 years. TFBT has supplied training, ecological advice, technical support, GIS mapping assistance, traps, and staff to set out trap lines in conjunction with our team. ..and so it goes on. I would like to express our gratitude and thanks to TFBT as they have been a fantastic strategic partner and have assisted in the growth of our project and environmental outcomes across our 13,500 hectare control area. Puhoi Landcare is solely a volunteer based group and having a full time resource at our fingertips of this calibre has been fantastic

Paul Manton, Chair Puhoi Landcare Group


HOW YOU CAN HELP

If you love our work, the way we work, and the gains we are making, then join us to create a lasting legacy, where our friends and family, and the generations to come, can enjoy the same flourishing ecosystem we are collectively protecting and restoring.

Contact us now to volunteer,
trap, donate or sponsor!

Your contribution makes a difference!

admin@theforestbridgetrust.org.nz



THE FOREST BRIDGE TRUST
Ngāhere Whakawhiri
Protect. Enhance. Connect.

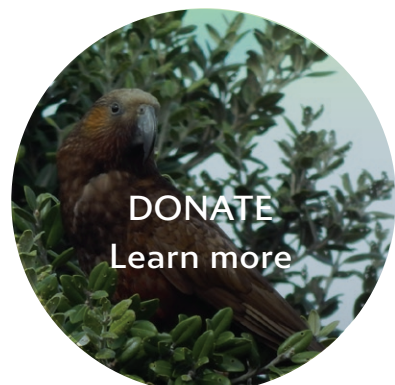
Help us to protect
our forest bridge

Sponsor hectares
for predator control

DONATE

WWW.THEFORESTBRIDGETRUST.ORG.NZ

Photo Credit: Ana Christmas



PROTECT MANAAKI

ENHANCE WHAKAPAIPAI

CONNECT TŪHONO

Funding Partners

We have been able to achieve these outcomes thanks to the economic and impact alignment with the following partners.



Special thanks to our private donors

Collaborators

This diverse network of collaborators are committed to the shared environmental goals enabling resources to be used effectively and sustainably to the greatest potential, offering resilience interweaved within our collective environmental actions and outcomes.

Ahuroa School, Arapāpera River Catchment Group, Be Partner Ready, Ethos Environmental, Friends of Awa Matakanakana Catchment Inc, Kaipara Flats School, Kaipara Kiwi, Kaukapakapa School, Kourawhero Conservation Trust, Leigh Harbour Valley Society, Leigh School, Mahurangi West Pest, Mahurangi College, Mataia Restoration Project, Matakana School, Mountains to Sea Conservation Trust, Ngāti Awa, Ngāti Manuhiri, Ngāti Rango, Ngāti Whātua o Kaipara, Pest Free Leigh, Pest Free Mahurangi East Peninsula, Piroa Conservation Trust, Predator Free 2050, Puhoi Landcare, QEII/Rata Bush, Shorebirds Trust, South Head Landcare, Springboard, Takatu Landcare, Tamahunga Trappers, Tauhoa School, Tāwharanui Regional Park, Te Uri o Hau, Tomarata School, Unitec, Wainui School, Wellsford School, Whangateau Residents and Ratepayers.

Supporters

Values-based ways of working is recognised for producing outcomes that align with Te tiriti and are sustainable and resilient. We couldn't do what we do without this network of in-kind resourcing and enduring relationships that are authentic and reliable.

Ākina Foundation, Belton, Centre for Social Impact, Connovation, Cue Haven, Earthskin, Eagle Tech, Matakana Country Park, Matakana ITM, Matakana Pony Club, Mataia Homestead, NZ AutoTraps, Northpine, Restore Rodney East, Sawmill Brewery, Simpson Western, Streamlands Suffolk Sheep Farm, Sustainable Business Network, Trackme, Turner Hopkins.

Ko tāu rou, ko tāku rou, ka ora te taiao, ko tāu hoe,
ko tāku hoe, ka mānu te waka, here mai, here atu,
kia Kotahi e, here mai, here atu, kia Kotahi e.

With your contribution and my contribution, the natural environment will be well, with your oar and my oar our waka will remain afloat, gather in and spread afar, let us all be one.

PROTECT MANAAKI

ENHANCE WHAKAPAIPAI

CONNECT TŪHONO



**THE FOREST
BRIDGE TRUST**
Ngāhere Whakawhiti
Protect. Enhance. Connect.

FOLLOW US ON SOCIAL MEDIA

